
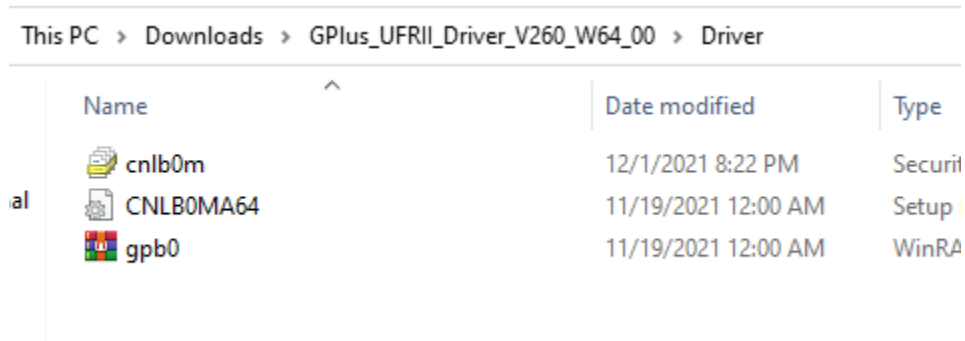
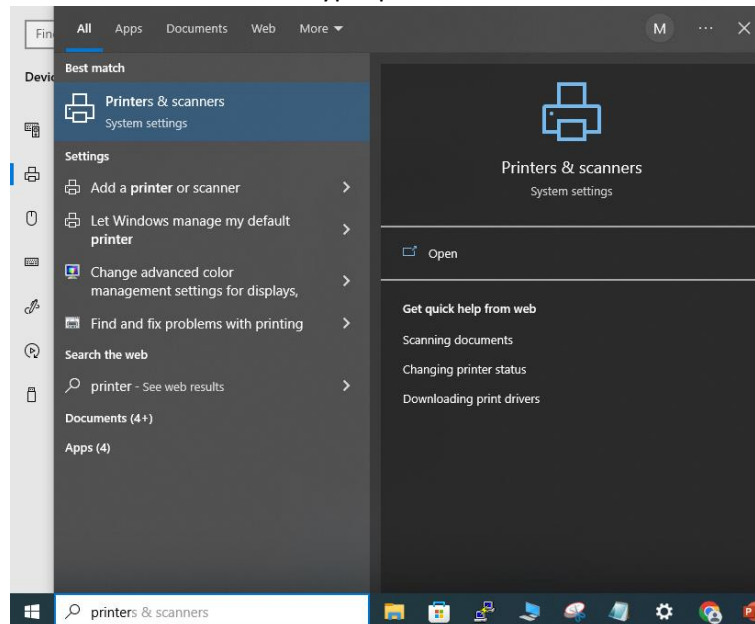


Instruction guidelines for installing CeNSE central printer

1. Download the printer driver from here
<https://in.canon/en/support/imageRUNNER%20ADVANCE%20C3520%20C3520i/model>
2. Double click on the downloaded file:  GPlus_UFR1I_Driver_V260_W64_00 , files will be extracted to the folder



3. Now, press Windows button and type 'printer' in search box



4. Select 'Printers and 'scanners'
5. Click on 'Add a printer or scanner'
6. Click on 'The printer that

The printer that I want isn't listed

7. In 'Add Printer' pop up select 'Add a printer using an IP address or hostname' and click next

 Add Printer

Find a printer by other options

My printer is a little older. Help me find it.

Select a shared printer by name

Example: \\computername\printername or
http://computername/printers/printername/.printer

Add a printer using an IP address or hostname

Add a Bluetooth, wireless or network discoverable printer

Add a local printer or network printer with manual settings

8. Select 'device type' as 'TCP/IP Device' and type 10.56.10.180 in 'Hostname or Ip address' and click next

 Add Printer

Type a printer hostname or IP address

Device type:

TCP/IP Device

Hostname or IP address:

10.56.10.180

Port name:

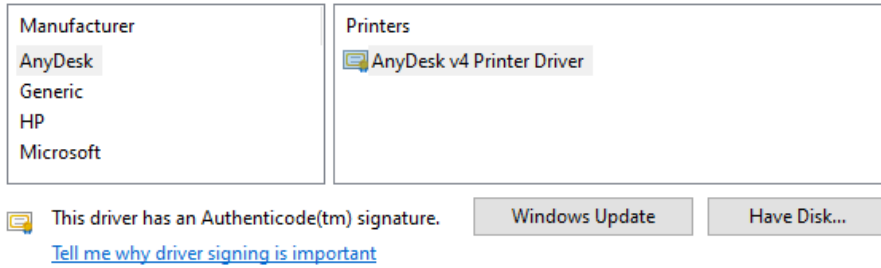
10.56.10.180

Query the printer and automatically select the driver to use

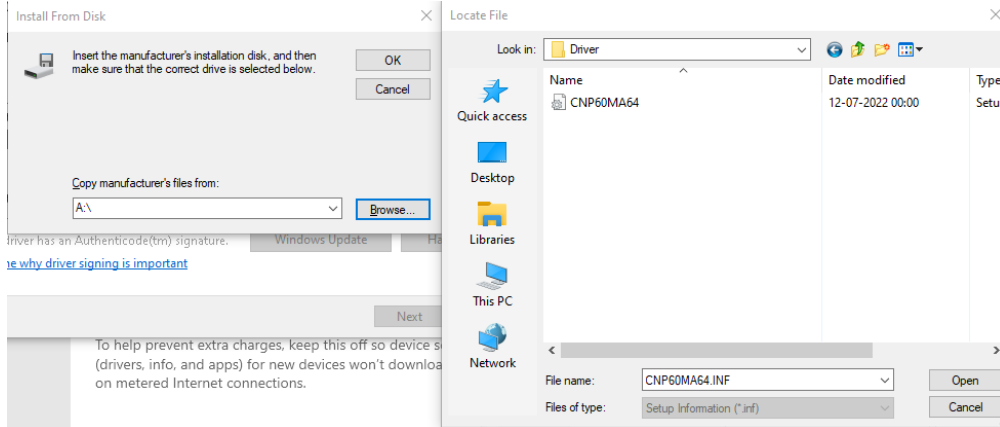
Autodetect detects WSD and TCP/IP printers.

To search for IPP printers, please select IPP from the drop down box

9. Click on the [Have Disk]

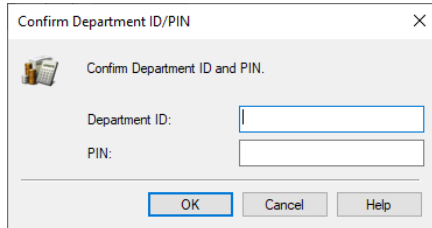


10. Click [Browse] → select the prepared inf file



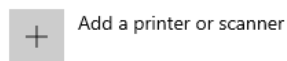
Click 'open' and then 'ok'

11. Install the driver according to the instructions on the screen – click 'next'; select 'Do not share this printer'; then click 'next' → click [Finish].
12. Printer is listed under 'Printers & Scanners'
13. Enter your ID and password to print:



Printers & scanners

Add printers & scanners



Printers & scanners

